



# Snow and Ice Program & Policy

Revision #	2024/2025
Implementation Date	11/21/24
Last Reviewed/Update Date	11/08/24
Resolution #	32236

Page 1 of 9

## 1. Introduction

The Public Works Department is responsible for providing snow and ice control for the City streets and the City's designated snow routes. It is the intent of the Snow and Ice Program to establish general policies and procedures to make travel within the City as safe as possible.

The City does not guarantee that streets will be free of snow and ice after plowing. Bare dry pavement should not be expected and will not be provided. The City attempts to maintain adequate traction for vehicles properly equipped for winter driving conditions.

## 2. Classification of Streets

**PRIORITY ONE.** The streets designated priority one includes all snow routes within the City as established by the City Council. (See appendix "A"). Also, included are extensions of snow routes outside of Marion's corporate limits as agreed between the City of Marion and adjacent jurisdictional governments. (See appendix "B" and "C"). See Primary Routes map.

**PRIORITY TWO.** The streets designated as priority two include the Central Business District and certain streets serving business/commercial areas. The Central Business District streets and public areas are within the boundaries of 9th Street, 9th Avenue, 13th Street and 6th Avenue. Streets serving business/commercial areas include the following: See Secondary plow routes map.

- 49<sup>th</sup> Street – 6<sup>th</sup> to 8<sup>th</sup> Ave
- 4th Avenue east of 35th Street
- 50<sup>th</sup> St. – 29<sup>th</sup> Ave to Prairie Ridge Ave
- 51<sup>st</sup> Street – 6<sup>th</sup> to 8<sup>th</sup> Ave
- 6<sup>th</sup> Avenue – 13<sup>th</sup> to 15<sup>th</sup> Streets
- 6<sup>th</sup> Avenue – 49<sup>th</sup> to 51<sup>st</sup> Streets
- Air Com Drive (all roads east of airport)
- Airport Road east just past Airport's second drive
- Armar Drive – North of Hwy 100
- Beall Court (Kwik Star)
- Cardinal Drive
- Cemar Court
- Commercial Area-Linn Aire & 62nd St
- Commercial Avenue
- Frontage Road from Hennessey to E Kacena Ave
- Industrial Avenue
- Irish Dr.-Irish Ct to Lowe Park Entrance
- Katz Drive, to Fire #2
- Learning Lane – 35<sup>th</sup> Ave to north end
- Linden Drive
- Lyons Lane
- Menard Lane
- Oak Lane
- Oakbrook Drive
- S 12<sup>th</sup> Street – A Ave to Grand Ave
- Tama Street South of Bus. 151 east to Armar

**PRIORITY THREE.** The streets designated as priority three include streets in residential areas with cul-de-sacs and dead-end streets being finished last. See Maintenance Zone's map.



# Snow and Ice Program & Policy

Revision # 2024/2025

Implementation Date 11/21/24

Last Reviewed/Update  
Date 11/08/24

Page 2 of 9

Resolution # 32236

**PRIORITY FOUR.** The streets designated as priority four include alleys.

### 3. *Level of Service*

**PRIORITY ONE STREETS.** Plowing should generally begin on priority one streets when the accumulation of snow on the roadway exceeds one (1) inch. The roadway accumulation is generally independent of the total accumulation of snow in the area. Priority one streets will be plowed before plowing proceeds to any other areas. Salt and/or materials will be applied when it is determined by the Public Works Director, or their designee, that sufficient snow and/or sufficient ice accumulation exists throughout the City.

**PRIORITY TWO STREETS.** Plowing of priority two streets should begin when accumulations of snow on the roadway itself exceeds one (1) inch and after all priority one streets have been plowed. Salt and/or materials will be applied to the streets when it is determined by the Public Works Director or their designee that sufficient snow and/or sufficient ice accumulation exists throughout the City.

**PRIORITY THREE STREETS.** Plowing operations should begin on these streets when the accumulation of snow on the roadway itself exceeds two (2) inches and after the completion of plowing operations on priority one and two streets. Salt, and/or materials will normally be applied only to hills, curves and school access streets and problem intersections as identified by the Public Works Director or their designee and only following the determination that sufficient snow and/or sufficient ice accumulation exists throughout the City. Certain streets in this classification, due to their particular geometric design (dead ends, cul-de-sacs, etc.), should be plowed independently from the other streets in town.

**PRIORITY INTERSECTIONS.** The City will clean up these intersections when personnel is available.

**PRIORITY FOUR STREETS.** The City will not plow streets in this category.

### 4. *Special Considerations*

**CITY BUS SHELTERS.** All City bus shelters should be cleared by the Parks Department within 24 hours after a snowstorm ends.

**CENTRAL BUSINESS DISTRICT (CBD).** Snow will be cleared from the CBD area when there is sufficient accumulation that constricts parking and/or available sidewalk area. Conventional roadway deicers will be used when sufficient ice has accumulated unless otherwise directed by



# Snow and Ice Program & Policy

Revision #	2024/2025
Implementation Date	11/21/24
Last Reviewed/Update Date	11/08/24
Resolution #	32236

Page 3 of 9

the Public Works Director or their designee. Snow will generally be removed during an overnight shift one- or two-days following completion of all other plowing operations. In locations where snow has been piled in parking spots, or in furrows in the middle of the road, it will be hauled out as soon as possible after the storm has ended and all other areas have been plowed.

**CENTRAL CORRIDOR.** Pavers and pavement materials utilized within the Central Corridor located on 6th Avenue between 9th Street and 12th Street and on 10th Street between 5th Avenue and 6th Avenue will require alternative methods for snow and ice removal. Public Works shall have one truck equipped with a polyurethane blade or rubber cutting edge and shall be assigned specifically to this area for snow and ice removal. Conventional roadway deicers will be utilized unless otherwise directed by the Public Works Director or their designee.

## **5. *Winter Storm Parking***

When Winter Storm Parking is in effect, as per Chapter 313-10.11 of the Marion Code of Ordinance, the City Hall, Police Department and Fire Department, Fire Chief, EM Coordinator will be contacted.

The Police Department shall have primary responsibility for the enforcement of winter storm parking. This shall include ticketing and/or towing of illegally parked vehicles.

Parking Permits to park on city streets during snow removal operations, or to designate certain streets exempt, are available at the Public Works Department. Such permits may be granted for those individuals that do not have a driveway or available off-street parking or need on street parking due to medical or physical conditions. Permits will be investigated on a case-by-case basis and will have to be renewed yearly by December 1.

## **6. *Snow Route Maps***

Maps indicating all priority one streets will be kept at the Public Works Department, City Hall, Police Department and Fire Department.

## **7. *Right of Way Damage***

Any landscaping, irrigation heads, lighting systems and other objects placed within the public right of way will be the responsibility of the homeowner. Refer to Right of Way Hold Harmless Agreement. Sod removed by a plow or wing will be repaired in the spring by the City using good black dirt and seed. Watering will be the responsibility of the homeowner. Any inanimate object placed within the public right of way, either permitted or un-permitted, that could cause damage to snowplow equipment will have to be removed at the owner's expense. Failure to remove items after notice, will be removed by the city at the owner's expense.

Right of Way Damage shall be submitted to the City Manager's Office.



## Snow and Ice Program & Policy

Revision # 2024/2025

Implementation Date 11/21/24

Last Reviewed/Update  
Date 11/08/24

Page 4 of 9

Resolution # 32236

### **8. *Snow Storage and Removal***

Ongoing snow and ice removal efforts require the use of the entire public right of way for storage of plowed snow. Depending on the volume of snow and rate of occurrences, available storage within the right of way can be limited and/or create sight obstructions. It will be the responsibility of the city to remove or wing back such snow in the right of way. Snow and/or ice that is placed in the driveways or on sidewalks because of plowing operations is and should be expected and unavoidable. The City will not provide driveway/sidewalk cleaning under any circumstances. Snow and/or ice placed around a homeowner's mailbox will be the responsibility of the homeowner.

### **9. *Questions***

Any questions concerning the above policy should be directed to the following:

City of Marion — Public Works Department  
202 44th Street, Marion, IA 52302  
319-377-6367 • [public-works@cityofmarion.org](mailto:public-works@cityofmarion.org)



## Appendix A

Revision # 2024/2025

Implementation Date 11/21/24

Last Reviewed/Update Date 11/08/24

Page 5 of 9

Resolution #

### Priority One Streets

Name	Description
10 <sup>th</sup> Avenue	10 <sup>th</sup> Street to 35 <sup>th</sup> Street
10 <sup>th</sup> Street	5 <sup>th</sup> Avenue to north City limits
11 <sup>th</sup> Street	1 <sup>st</sup> Avenue to 6 <sup>th</sup> Avenue
12 <sup>th</sup> Street	3 <sup>rd</sup> Avenue to 8 <sup>th</sup> Avenue
13 <sup>th</sup> Street	5 <sup>th</sup> Avenue to 8 <sup>th</sup> Avenue
14 <sup>th</sup> Street	4 <sup>th</sup> Avenue to 5 <sup>th</sup> Avenue
14 <sup>th</sup> Street	7 <sup>th</sup> Avenue to McGowan Blvd.
15 <sup>th</sup> Street	7 <sup>th</sup> Avenue to S 15 <sup>th</sup> Street Court
1 <sup>st</sup> Avenue	11 <sup>th</sup> Street to 31 <sup>st</sup> Street
1 <sup>st</sup> Street	3 <sup>rd</sup> Avenue to Marion Blvd.
22 <sup>nd</sup> Street	7 <sup>th</sup> Avenue to 10 <sup>th</sup> Avenue
22 <sup>nd</sup> Street	6 <sup>th</sup> Avenue to South to Hwy 100
24 <sup>th</sup> Street	10 <sup>th</sup> Avenue to 29 <sup>th</sup> Avenue
25 <sup>th</sup> Avenue	Indian Creek Road to 35 <sup>th</sup> Street
27 <sup>th</sup> Street	8 <sup>th</sup> Avenue to 28 <sup>th</sup> Avenue
28 <sup>th</sup> Avenue	24 <sup>th</sup> Street to 27 <sup>th</sup> Street
29 <sup>th</sup> Avenue	Alburnett Road to Hwy 13
31 <sup>st</sup> Street	Hwy 100 to Abbey Road
35 <sup>th</sup> Avenue	35 <sup>th</sup> Street to Hwy 13
35 <sup>th</sup> Street	Munier Road to Indian Creek Road
3 <sup>rd</sup> Avenue	1 <sup>st</sup> Street to 44 <sup>th</sup> Street
41 <sup>st</sup> Street	Willowood Avenue to McGowan Blvd
44 <sup>th</sup> Street	35 <sup>th</sup> Avenue to Hwy 100
49 <sup>th</sup> Street	6 <sup>th</sup> Avenue to 8 <sup>th</sup> Avenue
50 <sup>th</sup> Street	8 <sup>th</sup> Avenue to Prairie Ridge Avenue
51 <sup>st</sup> Street	6 <sup>th</sup> Avenue to 8 <sup>th</sup> Avenue
5 <sup>th</sup> Avenue	1 <sup>st</sup> Street to 31 <sup>st</sup> Street
62 <sup>nd</sup> Street	Hwy 151 to North Gateway Drive
6 <sup>th</sup> Avenue	1 <sup>st</sup> St. to 7 <sup>th</sup> Ave. & 26 <sup>th</sup> St. Roundabout
6 <sup>th</sup> Avenue	49 <sup>th</sup> Street to 51 <sup>st</sup> Street
6 <sup>th</sup> Street	8 <sup>th</sup> Avenue to 9 <sup>th</sup> Avenue
7 <sup>th</sup> Street	6 <sup>th</sup> Avenue to 9 <sup>th</sup> Avenue
8 <sup>th</sup> Avenue	44 <sup>th</sup> Street to Wal-Mart
8 <sup>th</sup> Avenue	Indian Creek Bridge to 31 <sup>st</sup> Street
9 <sup>th</sup> Avenue	12 <sup>th</sup> Street to 14 <sup>th</sup> Street
9 <sup>th</sup> Avenue	6 <sup>th</sup> Street to 7 <sup>th</sup> Street
9 <sup>th</sup> Street	6 <sup>th</sup> Avenue to 7 <sup>th</sup> Avenue



## Appendix A

Revision # 2024/2025

Implementation Date 11/21/24

Last Reviewed/Update Date 11/08/24

Page 6 of 9

Resolution #

A Avenue	South 11 <sup>th</sup> Street to South 22 <sup>nd</sup> Street
A Avenue	South 11 <sup>th</sup> Street to Pennington Drive
Abbey Road	31 <sup>st</sup> Street to Lennon Lane
Alburnett Road	Central Avenue to Cedar Springs Road
Alexis Lane	Raleigh Lane to Bullis Drive
Alpine Road	Linnview Drive to West 14 <sup>th</sup> Avenue
Armar South	To South End of Tama
Blairs Ferry Road	Marion Blvd to Northland Drive
Boyson Road	10 <sup>th</sup> Street to West City Limits
Brockman Avenue	10 <sup>th</sup> Street to 24 <sup>th</sup> Street
Bullis Drive	Alexis Lane to Meadow Ridge Blvd
Business Hwy 151/7 <sup>th</sup> Ave/Marion Blvd	Hwy 13 to Armar
Central Avenue	10 <sup>th</sup> Street to Alburnett Road
Connection Blvd	Winslow Road to N 10 <sup>th</sup> Street
East Post Road	Grand Avenue to Cottage Grove Road
East Robins Road	Alburnett Road to Timber Ridge Court
Echo Hill Road	Ridge Stone Lane to east end of pavement
Edinburgh Avenue	Alburnett Road to Victoria Street
Elim Drive	Grand Avenue to south end
Elm Street	West 14 <sup>th</sup> Street to Parkview Drive
F Avenue	South 11 <sup>th</sup> Street to South 14 <sup>th</sup> Street
Geode Street	29 <sup>th</sup> Avenue to Alburnett Road
Grand Avenue	31 <sup>st</sup> Street to Creekbend Drive
Hillview Drive	Meadowridge to South 26 <sup>th</sup> Street
Hunters Ridge Road	Windlow Road to Lucore Road
Indian Creek Road	10 <sup>th</sup> Street to Wallace Road
Kacena Avenue	Prairie Hill Drive to Scott Street
Lennon Lane	Abbey Road to Tower Terrace Road
Lindale Drive	Parkview Drive to south end
Linden Drive	7 <sup>th</sup> Avenue to Sunburst
Linnview Drive	West 8 <sup>th</sup> Avenue to Alpine Road
Lucore Road	Indian Creek Rd. to Royal Oak Ridge Drive
McGowan Blvd	10 <sup>th</sup> Street to 44 <sup>th</sup> Street
Meadowridge Drive	Hillview Drive to Bullis Drive
Meadowview Drive	East Post Road to South 15 <sup>th</sup> Street
Munier Road	31 <sup>st</sup> Street to Highway 100
Newcastle Road	Boyson Road to Tower Terrace Road
North Gateway Drive	62 <sup>nd</sup> Street to Partners Avenue
Parkview Drive	Elm Street to West 8 <sup>th</sup> Avenue
Partners Avenue	North Gateway Drive to Hwy 151
Pennington Drive	A Avenue to Alexis Lane



## Appendix A

Revision # 2024/2025

Implementation Date 11/21/24

Last Reviewed/Update Date 11/08/24

Page 7 of 9

Resolution #

<b>Pleasantview Drive</b>	South 15 <sup>th</sup> Street to South 26 <sup>th</sup> Street
<b>Prairie Ridge Avenue</b>	50 <sup>th</sup> Street to Bluegrass Street
<b>Raleigh Lane</b>	Pennington Drive to Alexis Lane
<b>South 11<sup>th</sup> Street</b>	Grand Avenue to 1 <sup>st</sup> Avenue
<b>South 14<sup>th</sup> Street</b>	A Avenue to F Avenue
<b>South 26<sup>th</sup> Street</b>	Pleasantview Drive to Hillview Drive
<b>Sunburst Avenue</b>	Linden Drive to 35 <sup>th</sup> Street
<b>Timber Ridge Court</b>	East Robins Road to north
<b>Tower Terrace</b>	Winslow Road to 35 <sup>th</sup> Street/Lucore Road
<b>Tower Terrace</b>	West to C Ave. Roundabout to Winslow Rd.
<b>Twixt Town Road</b>	Hwy 100 to Marion Blvd
<b>Valley Park Street</b>	Grand Avenue to 1 <sup>st</sup> Avenue
<b>Victoria Street</b>	Newcastle Road to Edinburge Avenue
<b>West 14<sup>th</sup> Avenue</b>	Alpine Road to Elm Street
<b>West 33<sup>rd</sup> Avenue</b>	Alburnett Rd to 3 <sup>rd</sup> Street
<b>West 8<sup>th</sup> Avenue</b>	Indian Creek Bridge to Linnview Drive
<b>Willowood Avenue</b>	35 <sup>th</sup> Avenue to 41 <sup>st</sup> Street
<b>Winchester Drive</b>	29 <sup>th</sup> Avenue to McGowan Blvd
<b>Windemere Way</b>	35 <sup>th</sup> Street to 44 <sup>th</sup> Street
<b>Winslow Road</b>	Glen Rock Dr. to Indian Creek Rd/Tower Terrace Road.



## Appendix B

Revision # 2024/2025

Implementation Date 11/21/24

Last Reviewed/Update Date 11/08/24

Page 8 of 9

Resolution #

### Agreement between City of Marion and Linn County

#### Linn County Routes

Name	Description
22 <sup>nd</sup> Street	South from Highway 100 to City limits.
Alburnett Road	Echo Hill Road to the north
Artesian Road	Lucore Road to the east
Diamond Lane	Cul de sac
Echo Hill Road	Artesian Road to Highway 13
Echo Hill Road	C Avenue to Alburnett Road
Fernow Road	Fields Drive east
Indian Creek Road	North from Lucore Road intersection
Marion Airport Road	Air Com Drive to the east
North 10 <sup>th</sup> Street	South to Shamrock Woods
Orrian Drive	City limits north to Cul de sac
Secrest Road	Highway 13, east
White Gate Court	North 10 <sup>th</sup> Street to city limits
Winslow Road	County Home Road south to Glen Rock Drive

#### Marion Routes

Name	Description
29 <sup>th</sup> Avenue	44 <sup>th</sup> Street east to Highway 13
35 <sup>th</sup> Avenue	35 <sup>th</sup> Street to Highway 13
Alburnett Road	Tower Terrace Road to Cedar Springs Road
East Post Road	City limits south to Cottage Grove Road
East Robins Road	Alburnett Road to Timber Ridge Court
Fernow Road	Hwy 13 east to Fields Drive
Lucore Road	Indian Creek Road, north to Royal Oak Ridge Drive
Marion Airport Road	Hwy 151 east to Air Com Drive
Munier Road	Highway 100 to 31 <sup>st</sup> Street
North 10 <sup>th</sup> Street	City limits north to Shamrock Woods
Shamrock Woods	North 10 <sup>th</sup> Street to east
Winslow Road	Indian Creek Road to Glen Rock Circle





## Appendix C

Revision # 2024/2025

Implementation Date 11/21/24

Last Reviewed/Update Date 11/08/24

Page 9 of 9

Resolution #

### Agreement between City of Marion and City of Cedar Rapids

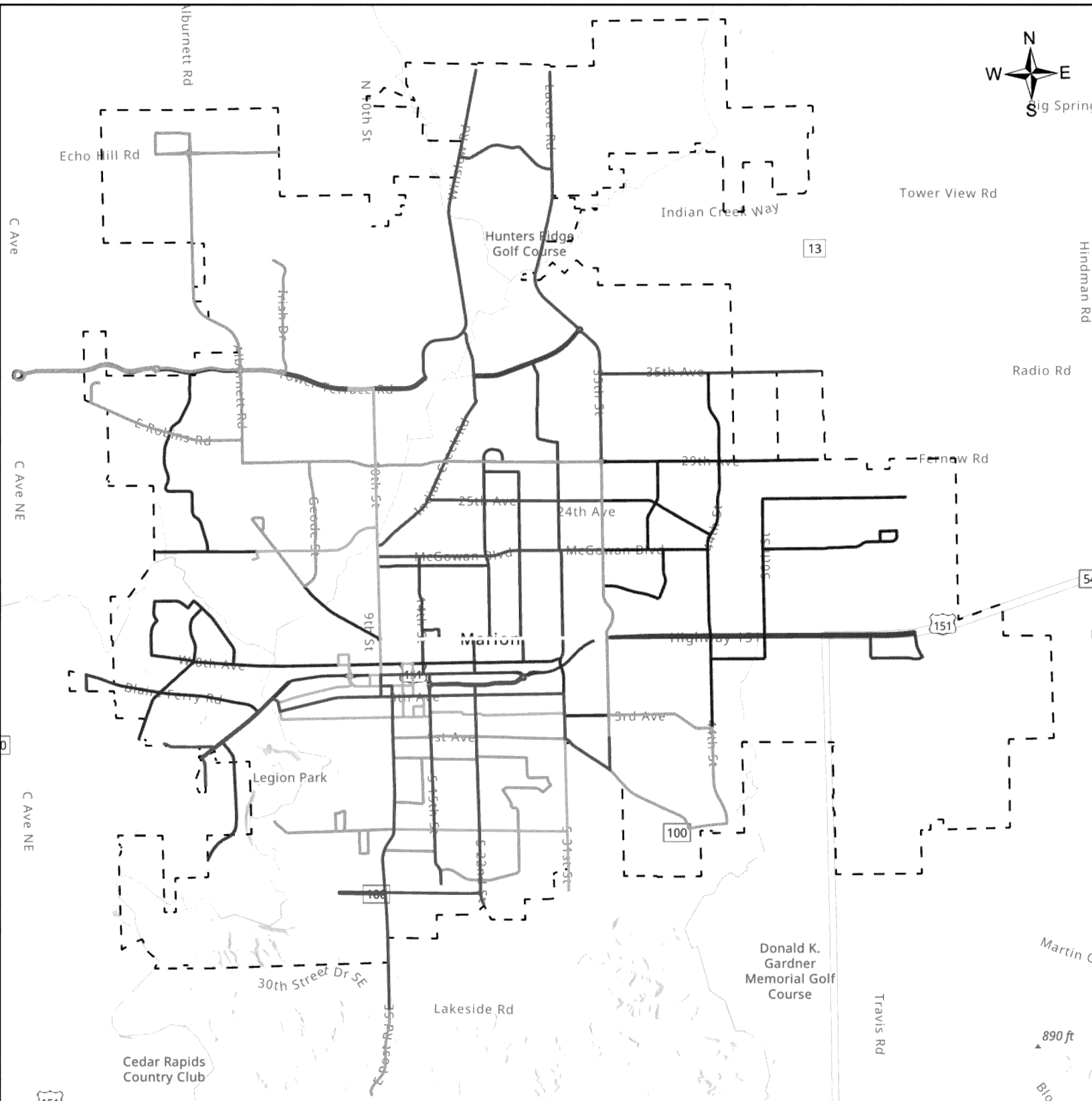
#### Cedar Rapids Routes

Name	Description
3 <sup>rd</sup> Avenue	33 <sup>rd</sup> Street Drive
Adel Street	Marion city limits, north to dead end
Armar Drive	Marion Blvd south to Marion city limits
Northland Avenue	Blairs Ferry Road, south to Marion city limits
Plumwood Court	Marion city limits, east to Cul de sac
Tama Street	Carroll Street north to end

#### Marion Routes

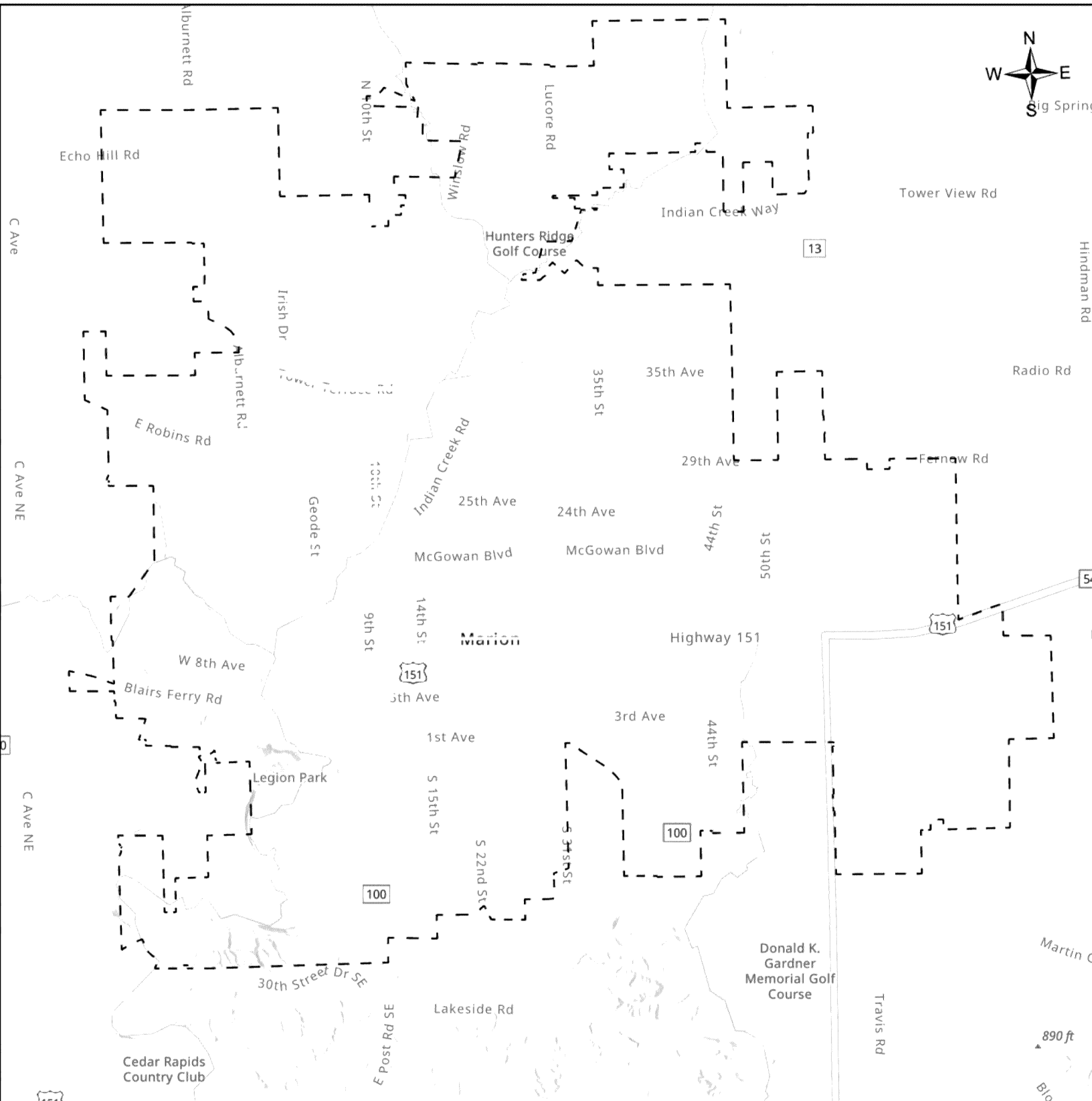
Name	Description
Armar Drive	US Business 151 to south end of Tama Street
Blairs Ferry Road	Lindale Drive, west to Marion city limits
Boyson Road	Marion city limits, west to Plumwood Court
Briargate Drive	Hawks Ridge Lane to Beckett Drive
Lindale Drive	Blairs Ferry Road south to Twixt Town Road
Tama Street	Highway 100 to south end
Twixt Town Road	Marion Blvd to Collins Road NE

# Primary Plow Routes



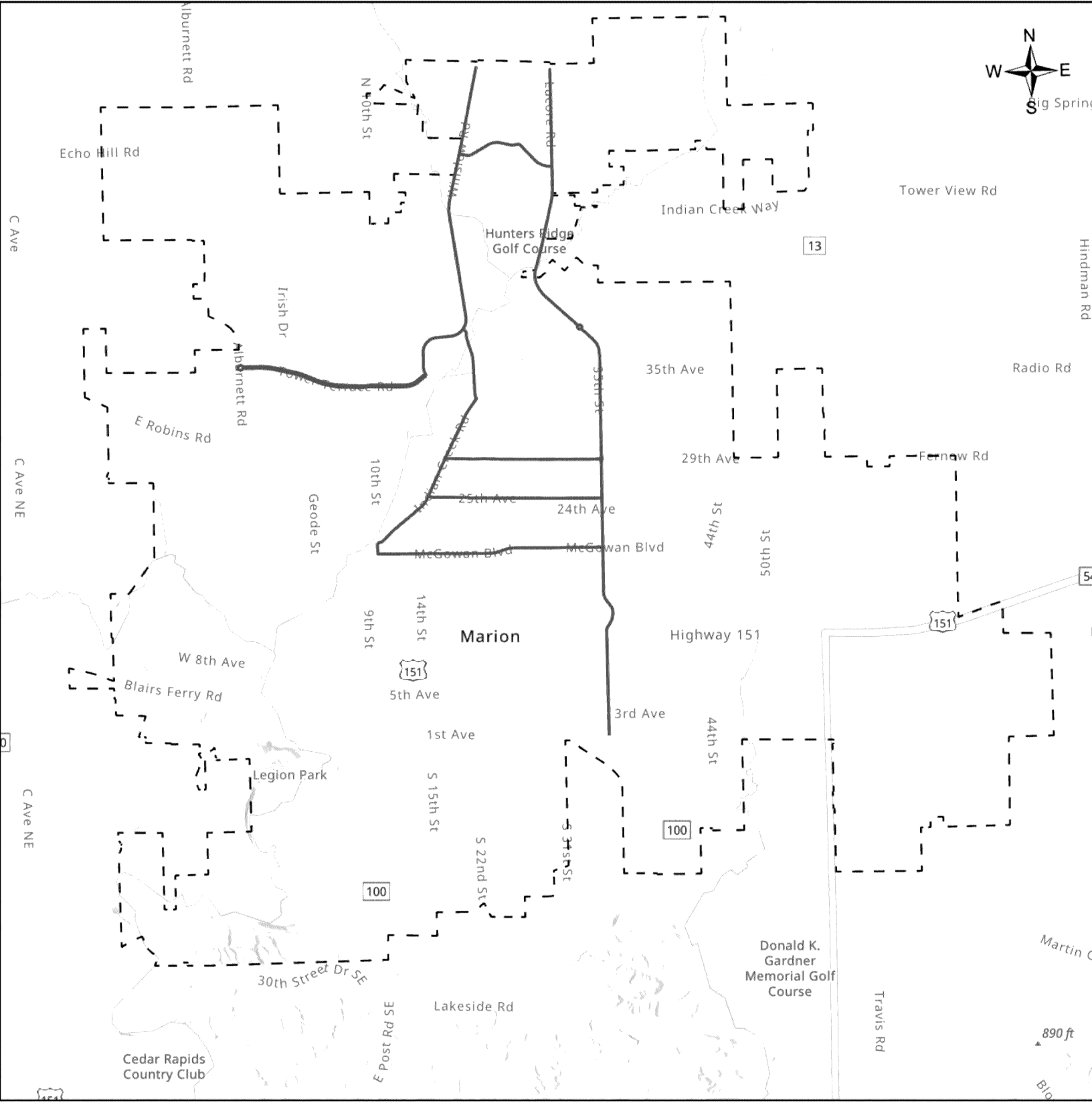
- |                     |                     |                   |
|---------------------|---------------------|-------------------|
| — Plow Route Pink   | — Plow Route Brown  | — Plow Route Blue |
| — Plow Route Orange | — Plow Route Black  | — Plow Route Red  |
| — Plow Route Green  | — Plow Route Purple |                   |
| — Plow Route Silver | — Plow Route Yellow |                   |

# Primary Plow Routes



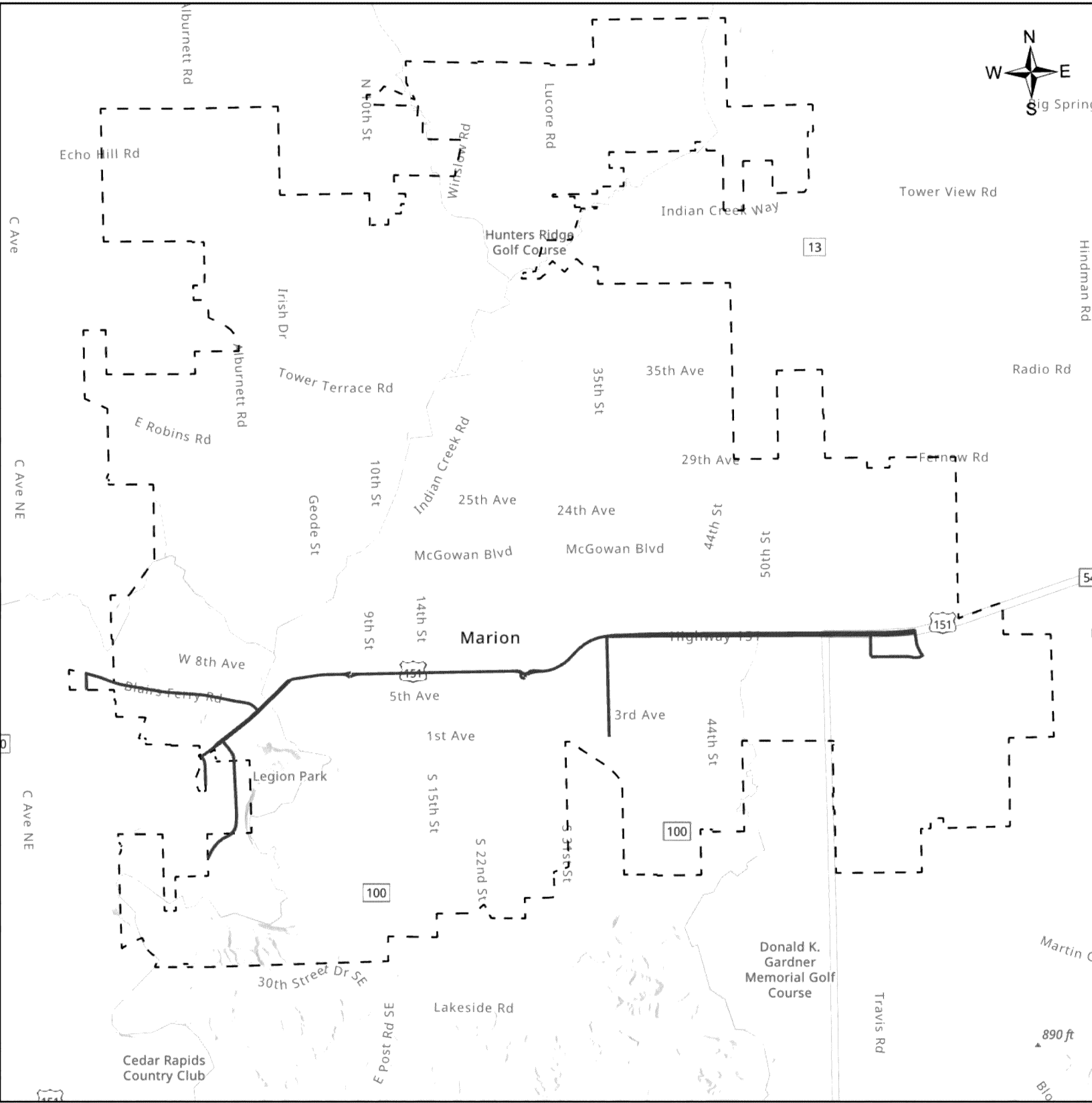
Plow Route Yellow

# Primary Plow Routes



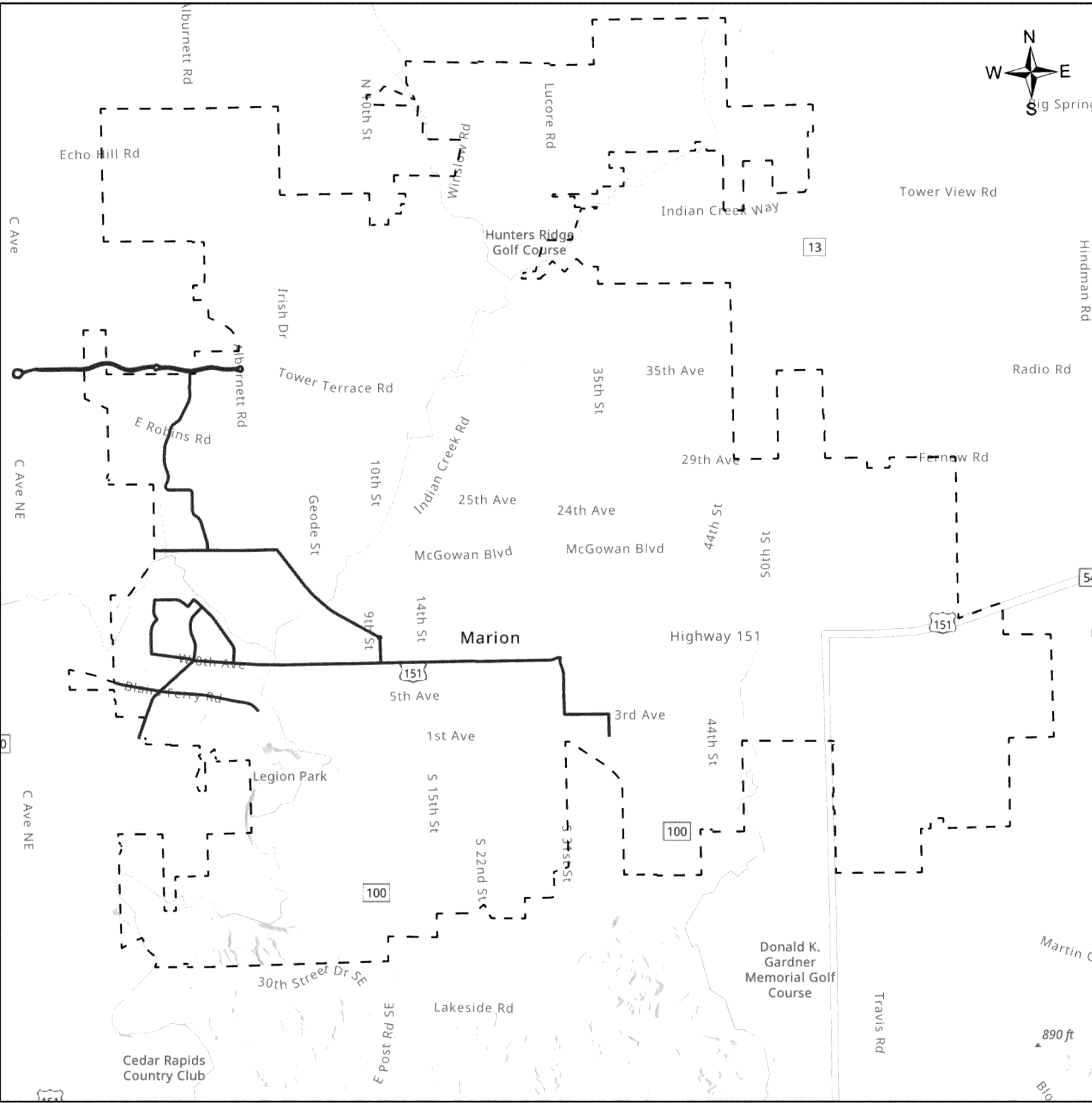
— Plow Route Brown

# Primary Plow Routes

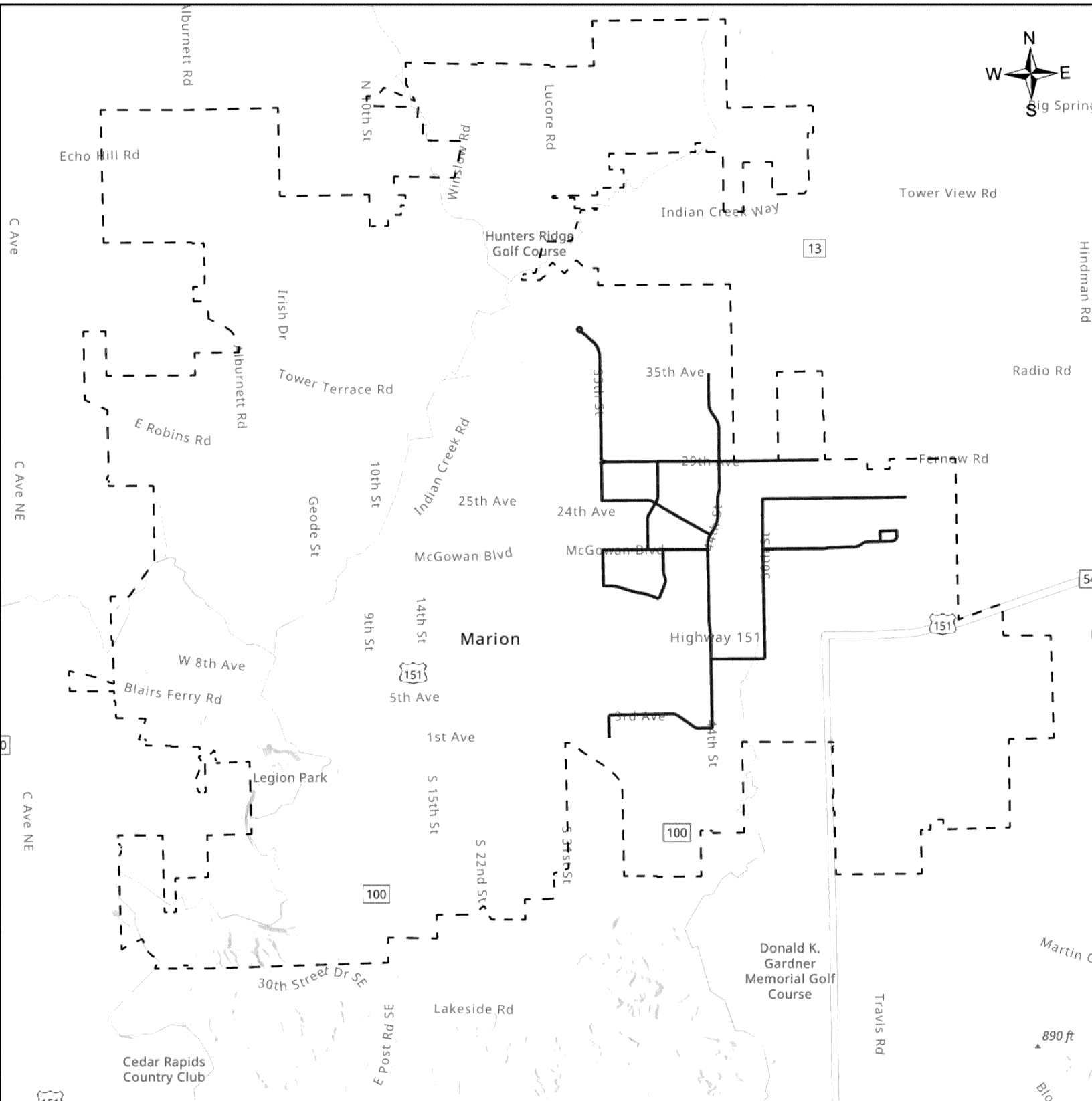




# Primary Plow Routes



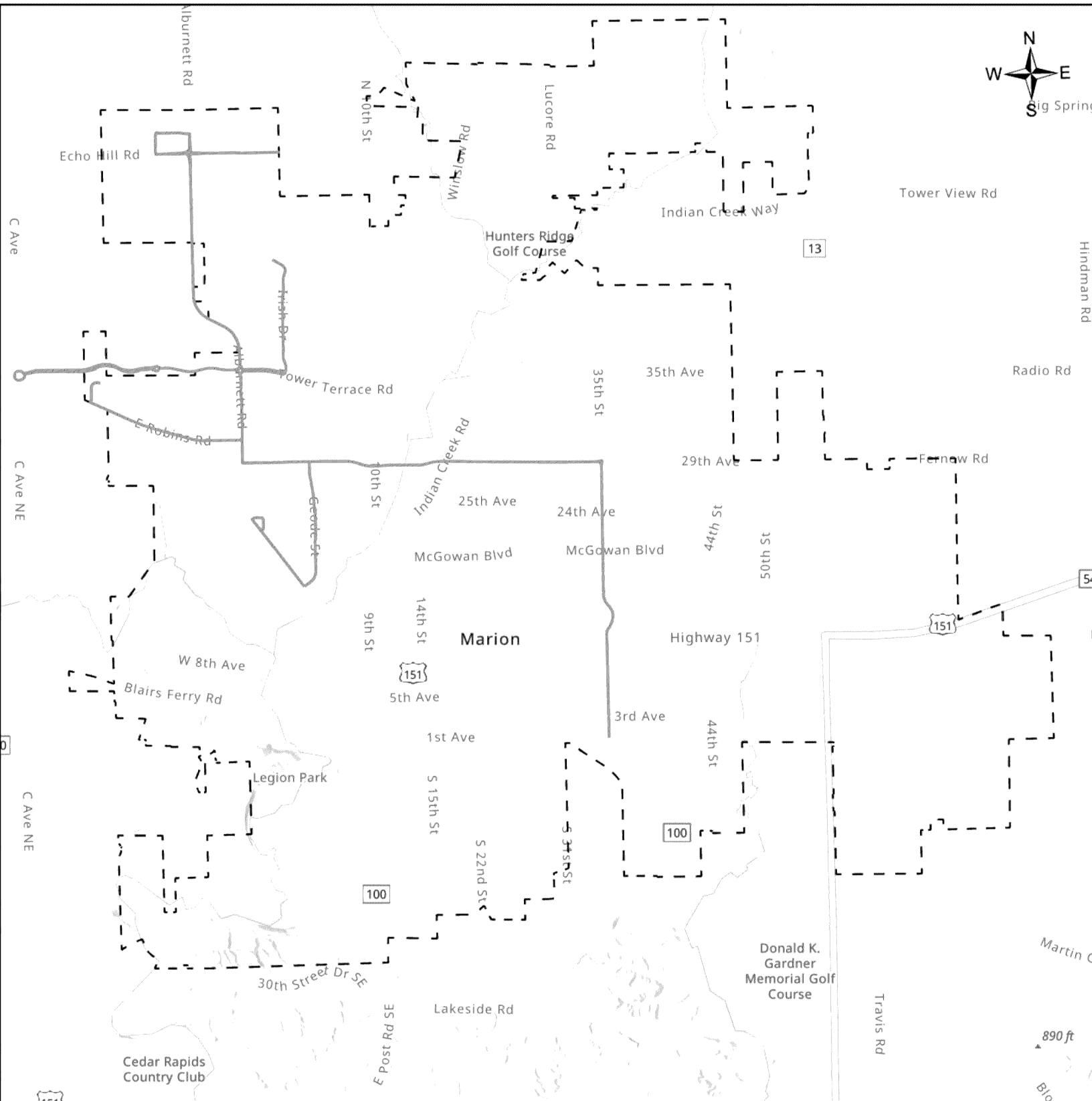
# Primary Plow Routes



— Plow Route Black

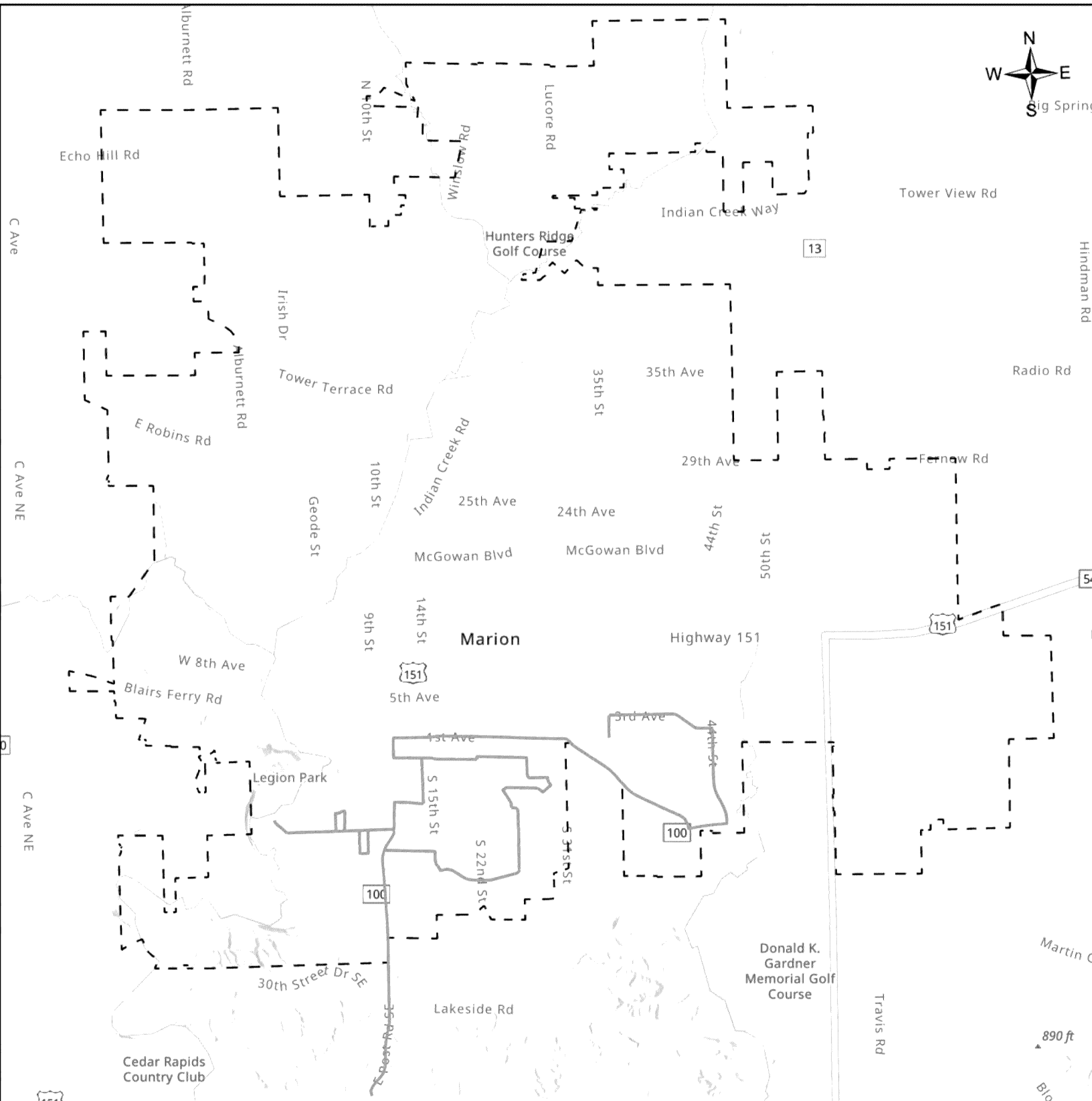


## Primary Plow Routes

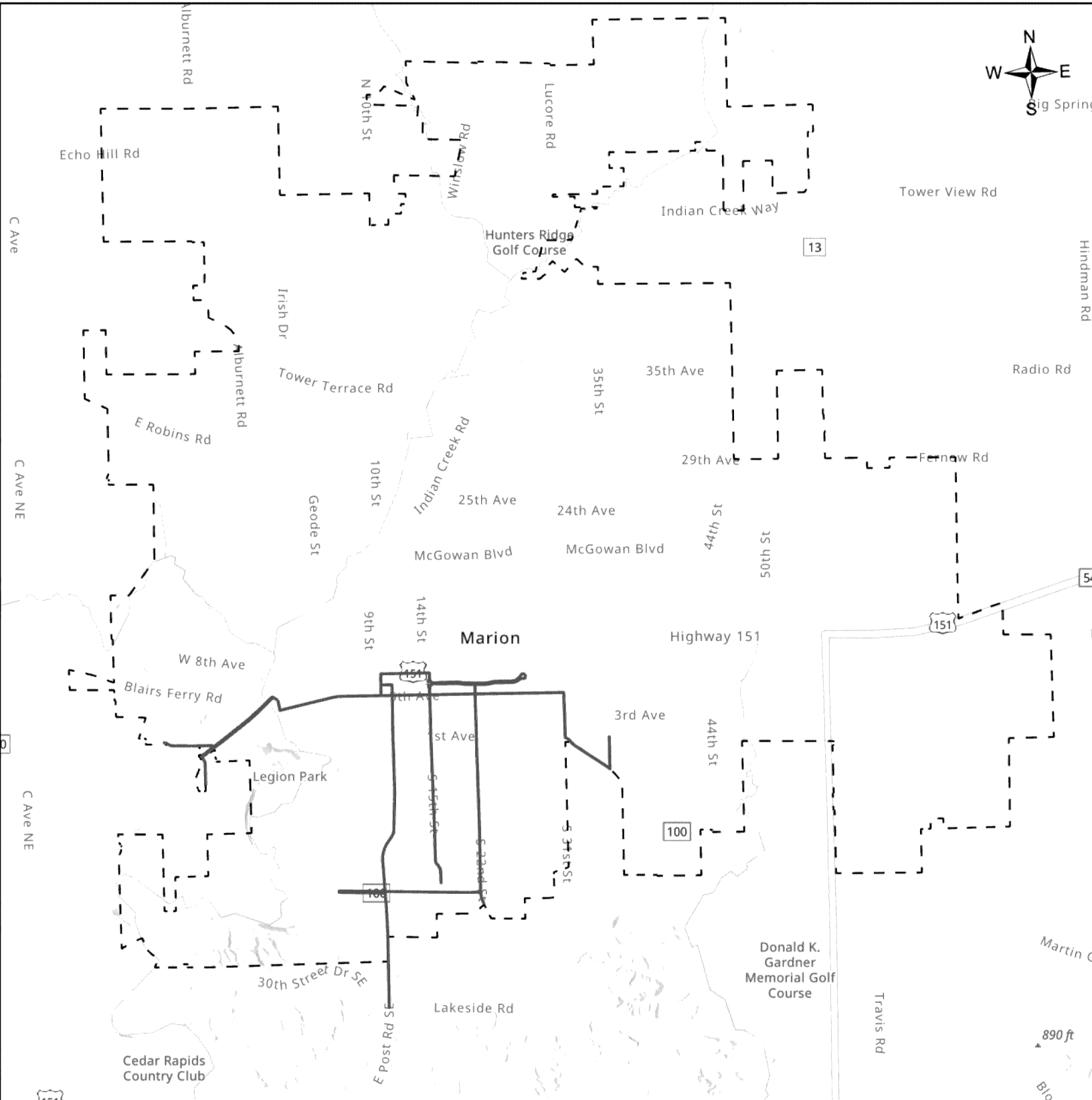


— Plow Route Silver

# Primary Plow Routes

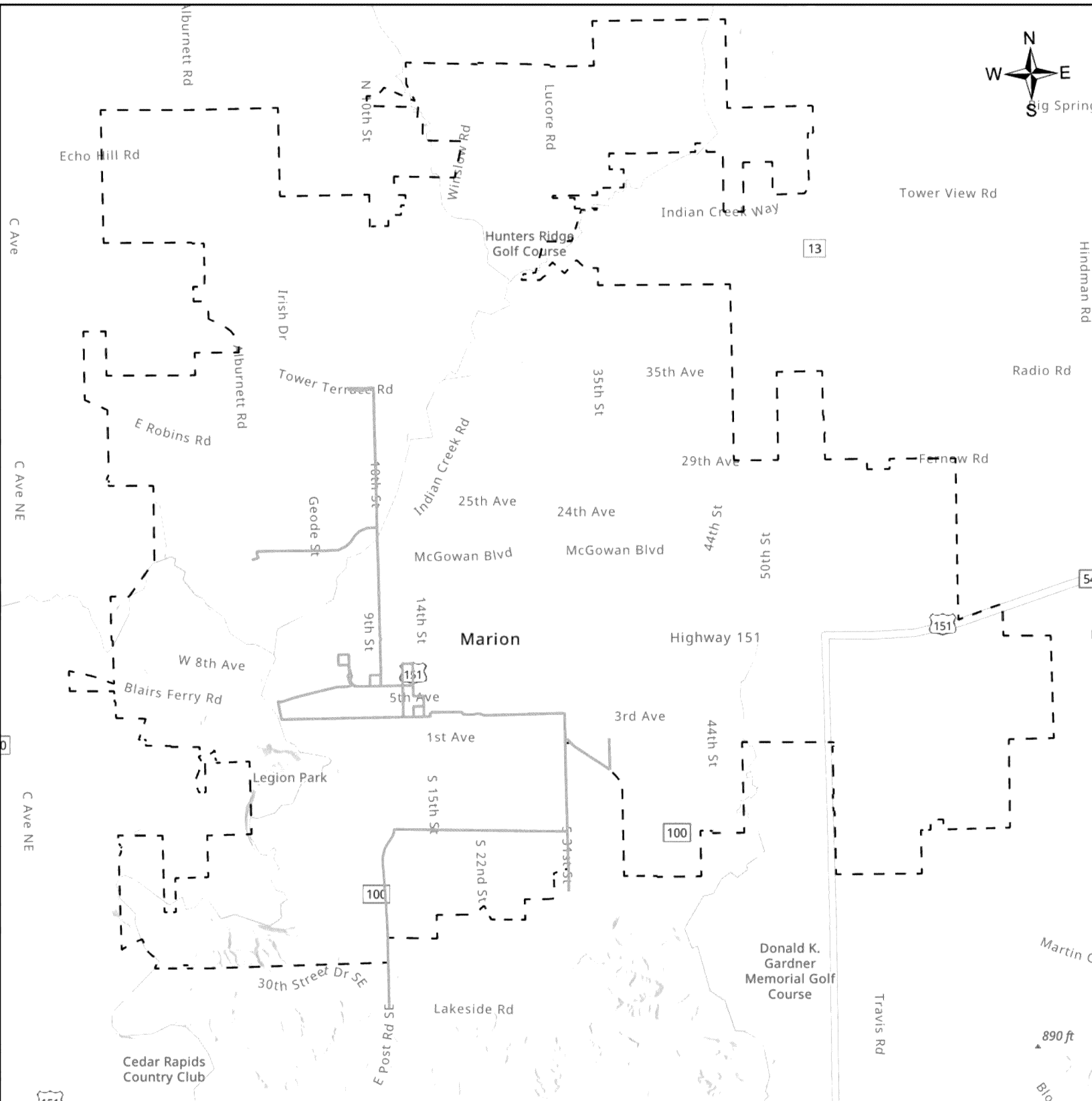


# Primary Plow Routes



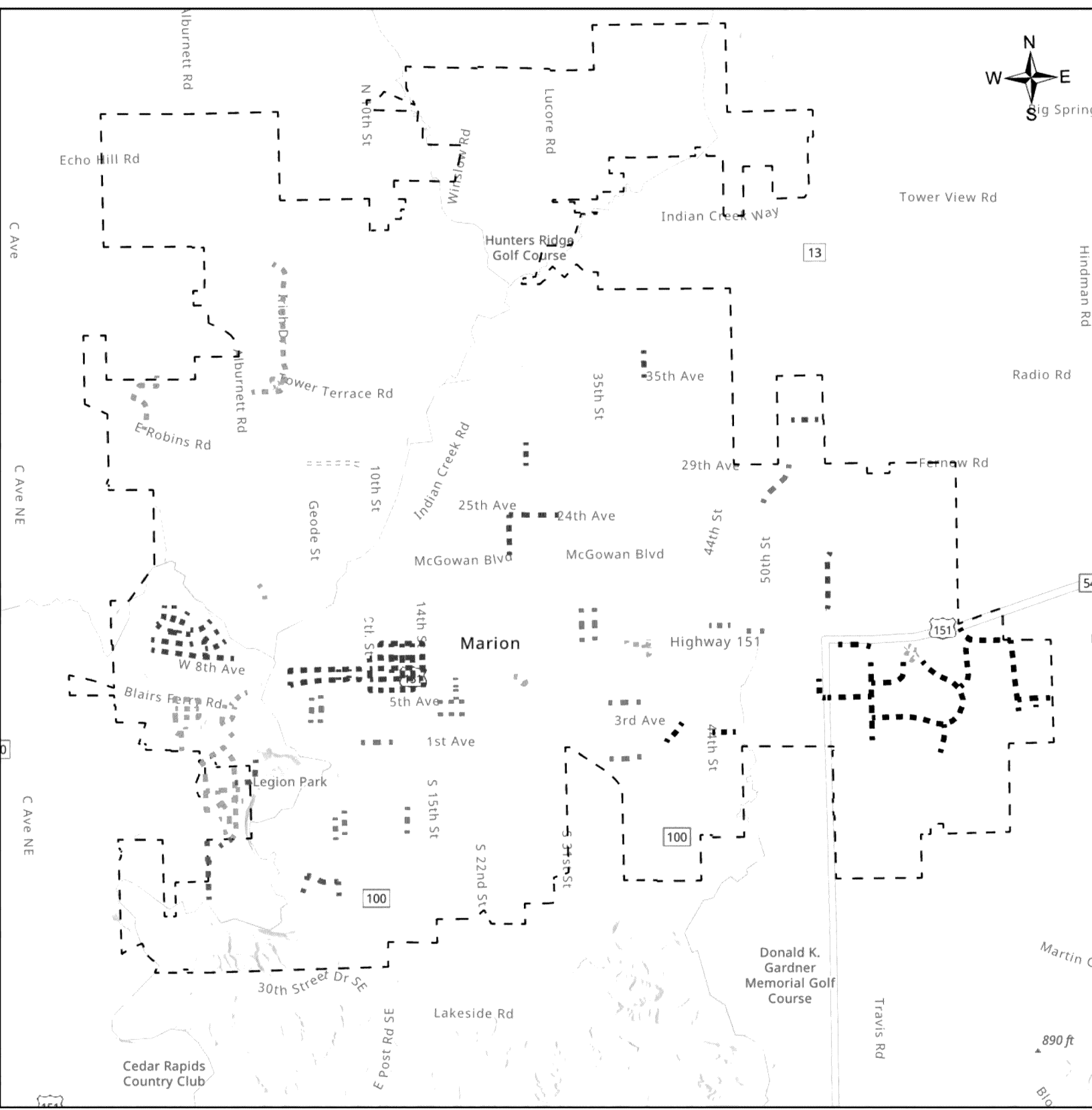
— Plow Route Pink

# Primary Plow Routes



— Plow Route Orange

# Secondary Plow Routes



- Secondary Plow 41
- Secondary Plow Orange
- Secondary Plow Brown
- Secondary Plow Green
- Secondary Plow Black
- Secondary Plow Blue
- Secondary Plow Purple
- Secondary Plow Red
- Secondary Plow Pink
- Secondary Plow Silver
- Secondary Plow Yellow

# Public Works Maintenance Zones

